

# MONTH 1

TOPICS WHICH WILL BE COVERED

# STUDENT WILL LEARN :

PARTS OF THE GUITAR

OPEN STRING NAMES

TUNING YOUR FIRST GUITAR

READING TABS AND PLAYING HALF CHORDS

Piano

Acoustic Guitar

TAB

0 1 0-0 1-1 0-0 0 3 3-3 0-0 2 1 0-0 1-1 0 3 3-3 0-0 0 1 0-0 1-1

**Cmaj**

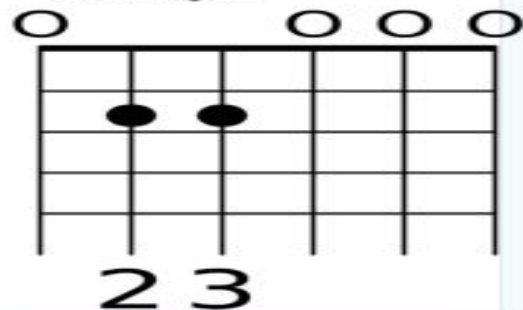
**G maj**

**Am**

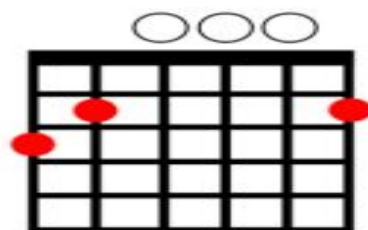
**G maj**

**C maj**

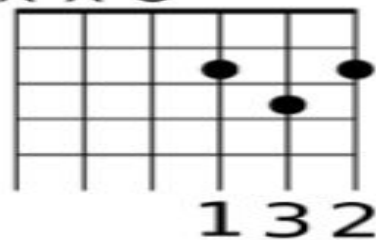
E minor Diagram



G MAJOR FULL CHORD

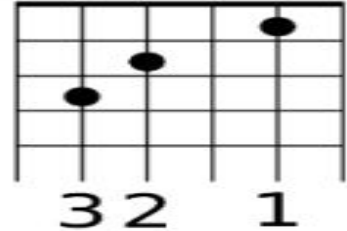


X X O

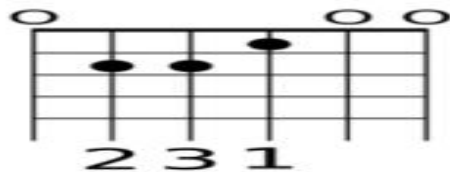


D maj

X O O

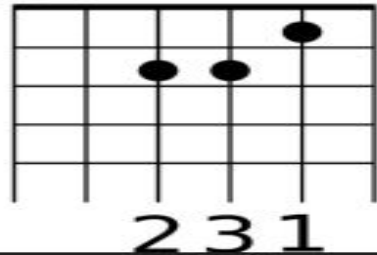


C maj



E MAJOR CHORD

X O O

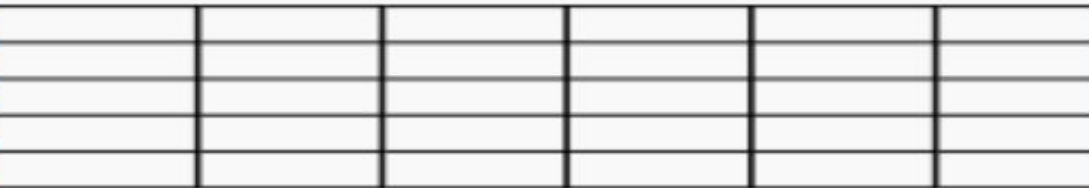




**T  
A  
B**

**E  
B  
D  
A**

**O  
O  
O  
O**



MONTH 2

TOPICS WHICH WILL BE COVERED

# STUDENT WILL LEARN

MUSIC THEORY :

SCALES

C MAJOR, G MAJOR, D MAJOR, E MINOR, A MINOR

APPLYING TABS TO PLAY SIMPLE MELODIES

STRUMMING PATTERNS

LEARN TO SING AND PLAY MANUH MANUH HOR BABE

# Ode to joy

$\text{♩} = 70$  **A**

Acoustic Guitar

Find all these fret positions on your guitar fretboard

T  
A  
B

6 **B**

it.

Remember to press the strings correctly

The sound must be clear, No Buzzing

T  
A  
B

10 **C**

it.

T  
A  
B



♩ = 72 **A**

C Major Scale

Musical notation for the C Major Scale in 4/4 time. The score consists of two staves: a treble clef staff and a guitar TAB staff. The treble staff shows a sequence of eighth notes: C4, D4, E4, F4, G4, A4, B4, C5, followed by a whole rest. The TAB staff shows the corresponding fret numbers: 3, 0, 2, 3, 0, 2, 0, 1, 0, 2, 0, 3, 2, 0, 3.

8

G Major Scale

Musical notation for the G Major Scale in 4/4 time. The score consists of two staves: a treble clef staff with a key signature of one sharp (F#) and a guitar TAB staff. The treble staff shows a sequence of eighth notes: G4, A4, B4, C5, D5, E5, F#5, G5, followed by a whole rest. The TAB staff shows the corresponding fret numbers: 0, 2, 0, 1, 3, 0, 2, 3, 2, 0, 3, 1, 0, 2, 0.

14

## D Major Scale

Musical notation for the D Major Scale, measures 14-19. The scale is written in treble clef with a key signature of one sharp (F#). The notes are D4, E4, F#4, G4, A4, B4, C#5, D5, C#5, B4, A4, G4, F#4, E4, D4. The tablature below shows the fret numbers for each note: 0-2-4-0, 2-0-2-3, 2-0-2-0, 4-2-0.

20

## A Minor Scale

Musical notation for the A Minor Scale, measures 20-25. The scale is written in treble clef with a key signature of no sharps or flats. The notes are A3, B3, C4, D4, E4, F4, G4, A4, G4, F4, E4, D4, C4, B3, A3. The tablature below shows the fret numbers for each note: 0-2-3-0, 2-3-0-2, 0-3-2-0, 3-2-0.

26

## E Minor Scale

Musical notation for the E Minor Scale, measures 26-31. The scale is written in treble clef with a key signature of one sharp (F#). The notes are E3, F#3, G#3, A3, B3, C#4, D#4, E4, D#4, C#4, B3, A3, G#3, F#3, E3. The tablature below shows the fret numbers for each note: 2-4-0-2, 0-1-3-0, 3-1-0-2, 0-4-2.

MONTH : 3

SING AND PLAY DEKHA NAI

MONTH 4 :

SING AND PLAY EI KHONI GAON